



US010125666B2

(12) **United States Patent**
Riley

(10) **Patent No.:** **US 10,125,666 B2**
(45) **Date of Patent:** **Nov. 13, 2018**

(54) **SYSTEMS AND METHODS OF
COMPRESSION IGNITION ENGINES**

(71) Applicant: **Nautilus Engineering, LLC**, Wichita,
KS (US)

(72) Inventor: **Matthew T. Riley**, Derby, KS (US)

(73) Assignee: **Nautilus Engineering, LLC**, Wichita,
KS (US)

(*) Notice: Subject to any disclaimer, the term of this
patent is extended or adjusted under 35
U.S.C. 154(b) by 0 days.

(21) Appl. No.: **15/400,813**

(22) Filed: **Jan. 6, 2017**

(65) **Prior Publication Data**

US 2017/0204777 A1 Jul. 20, 2017

Related U.S. Application Data

(60) Provisional application No. 62/278,919, filed on Jan.
14, 2016, provisional application No. 62/286,795,
filed on Jan. 25, 2016, provisional application No.
62/295,445, filed on Feb. 15, 2016, provisional
application No. 62/326,594, filed on Apr. 22, 2016,
(Continued)

(51) **Int. Cl.**
F02B 23/04 (2006.01)
F02B 75/04 (2006.01)
F02F 1/22 (2006.01)
F02F 1/42 (2006.01)
F02F 3/24 (2006.01)

(52) **U.S. Cl.**
CPC **F02B 23/04** (2013.01); **F02B 75/042**
(2013.01); **F02F 1/22** (2013.01); **F02F 1/4235**
(2013.01); **F02F 3/24** (2013.01); **Y02T 10/125**
(2013.01)

(58) **Field of Classification Search**

CPC F02B 23/04; F02B 75/042; F02F 1/4235;
F02F 1/22; F02F 3/24

See application file for complete search history.

(56) **References Cited**

U.S. PATENT DOCUMENTS

1,620,124 A 3/1927 Nielsen
2,151,218 A 3/1939 Lutz
(Continued)

FOREIGN PATENT DOCUMENTS

GB 1156821 7/1969
JP 02308920 A 12/1990
(Continued)

OTHER PUBLICATIONS

Written Opinion and Search Report for PCT/US2017/012611 dated
Jul. 20, 2017.

(Continued)

Primary Examiner — Jacob Amick

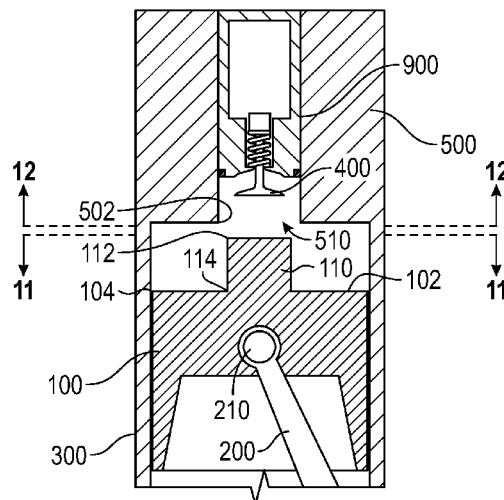
Assistant Examiner — Charles Brauch

(74) *Attorney, Agent, or Firm* — Kutak Rock LLP; Bryan
P. Stanley

(57) **ABSTRACT**

Apparatuses, systems and method for utilizing multi-zoned
combustion chambers (and/or multiple combustion cham-
bers) for achieving compression ignition (and/or spark-
assisted or fuel-assisted compression ignition) in an internal
combustion engine are provided. In addition, improved
apparatuses, systems and methods for achieving and/or
controlling compression ignition (and/or spark-assisted or
fuel-assisted compression ignition) in a “Siamese cylinder”
internal combustion engine are provided.

19 Claims, 14 Drawing Sheets



Related U.S. Application Data

provisional application No. 62/337,727, filed on May 17, 2016, provisional application No. 62/344,230, filed on Jun. 1, 2016, provisional application No. 62/417,897, filed on Nov. 4, 2016, provisional application No. 62/442,336, filed on Jan. 4, 2017.

(56)

References Cited

U.S. PATENT DOCUMENTS

2,190,537	A	2/1940	Wiebicke	
2,206,322	A	7/1940	Huesby	
2,221,156	A	11/1940	Swanson	
2,256,776	A	9/1941	Kammer	
2,505,999	A	5/1950	Smith	
2,719,514	A	10/1955	Schilling	
2,739,578	A	3/1956	Stump	
3,386,422	A	6/1968	Eyzat	
3,583,372	A	6/1971	Hoffmann	
3,738,322	A	6/1973	Smith	
3,738,332	A	6/1973	Eyzat et al.	
4,004,557	A	1/1977	Acker	
4,164,915	A	8/1979	Kulhavy et al.	
4,170,966	A	10/1979	Schmidt	
4,258,680	A	3/1981	Eckert	
4,378,764	A *	4/1983	Jorgensen	F02B 19/04 123/193.3
4,483,289	A	11/1984	Paul et al.	
4,557,231	A *	12/1985	Thery	F02B 23/00 123/193.3
4,662,330	A	5/1987	Shioyama et al.	
5,060,609	A	10/1991	Merritt	
5,083,530	A	1/1992	Rassey	
5,117,789	A	6/1992	Merritt	
5,195,486	A	3/1993	Ishii	
5,515,823	A	5/1996	Kawamura	
5,560,326	A	10/1996	Merritt	
5,664,541	A	9/1997	Yoo	
5,701,864	A	12/1997	Tanigawa et al.	
5,701,868	A	12/1997	Tomisawa	
6,032,617	A	3/2000	Willi et al.	
6,119,650	A	9/2000	Tanigawa et al.	

6,557,520	B2	5/2003	Roberts, Jr.	
6,561,139	B2	5/2003	Guy	
6,578,533	B1	6/2003	Gray, Jr.	
6,668,788	B2	12/2003	Agama	
6,817,323	B2	11/2004	Notaras et al.	
7,121,254	B2	10/2006	Wickman et al.	
RE40,500	E	9/2008	Doers et al.	
7,438,044	B2	10/2008	Webster et al.	
8,205,593	B2	6/2012	de Versterre	
8,327,821	B2	12/2012	Guibert	
2003/0041836	A1	3/2003	Roberts, Jr.	
2005/0235946	A1	10/2005	Doers et al.	
2007/0014459	A1	1/2007	Palmer	
2007/0084428	A1 *	4/2007	Weaver	F02B 75/04 123/143 A
2007/0144459	A1	6/2007	Fiveland	
2007/0163535	A1	7/2007	Walter	
2008/0060625	A1	3/2008	Raymond et al.	
2008/0314363	A1	12/2008	Bailey	
2011/0224882	A1 *	9/2011	Makino	F02D 35/021 701/102
2013/0291827	A1	11/2013	Hah	
2014/0182566	A1 *	7/2014	Kreuter	F02B 41/04 123/568.11
2015/0315957	A1	11/2015	Bergin et al.	

FOREIGN PATENT DOCUMENTS

JP	03003920	A	1/1991
JP	04136415	A	5/1992
JP	04318218	A	11/1992
JP	06193446	A	7/1994
JP	2819054		10/1998
JP	11-193720		7/1999
JP	2003-083071		3/2003

OTHER PUBLICATIONS

Written Opinion and Search Report for PCT/US2018/026743 dated Jul. 17, 2018.
Patakun website address: <http://www.pattakon.com/pattakonPatBam.htm>; last accessed Aug. 29, 2018.

* cited by examiner

FIG. 1 (prior art)

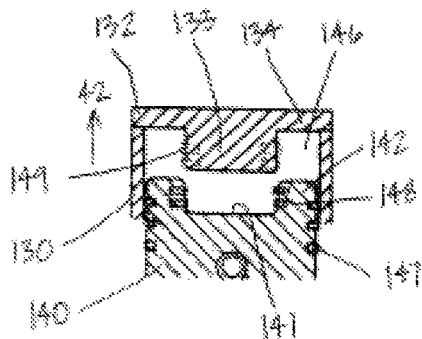


Fig. 2
(prior art)

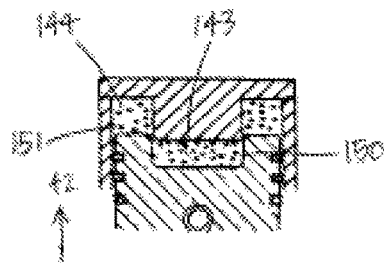


Fig. 3
(prior art)

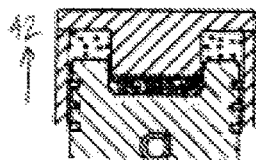


Fig. 4
(prior art)

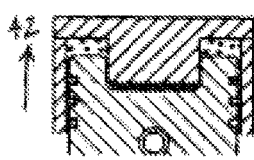


Fig. 5
(prior art)

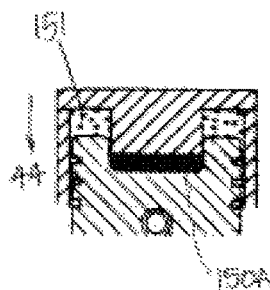


Fig. 6
(prior art)

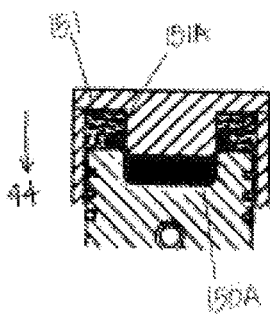


Fig. 7
(prior art)

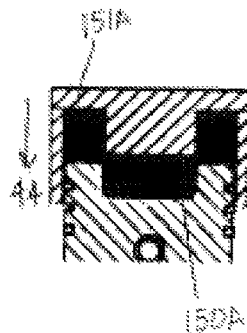


Fig. 8
(prior art)

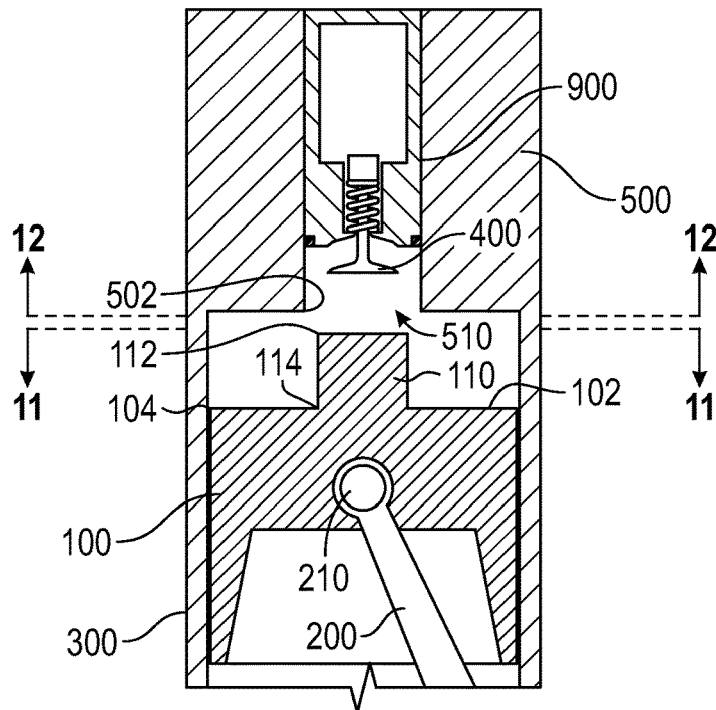


FIG. 9

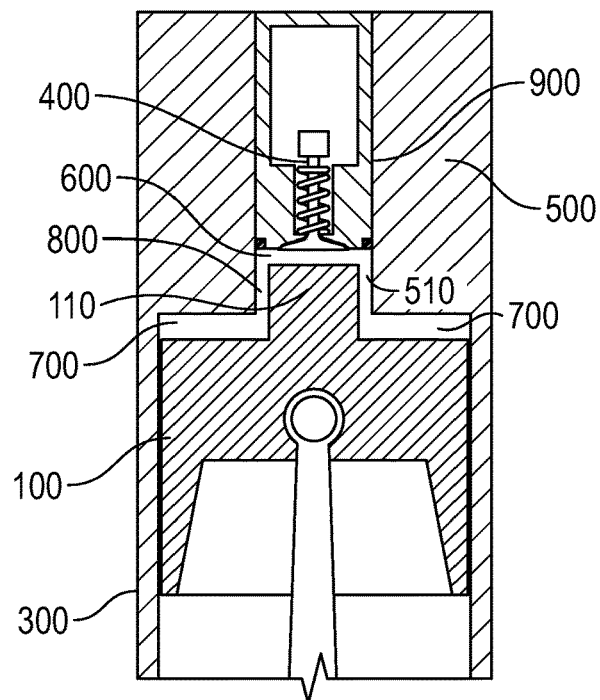


FIG. 10

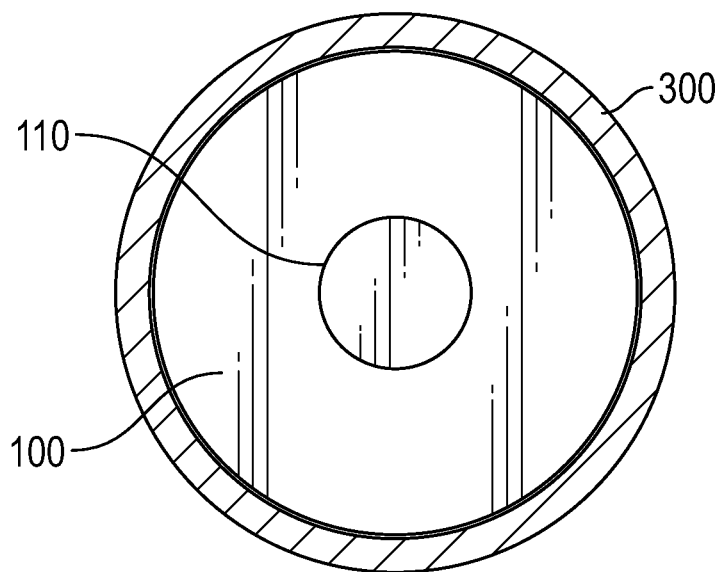


FIG. 11

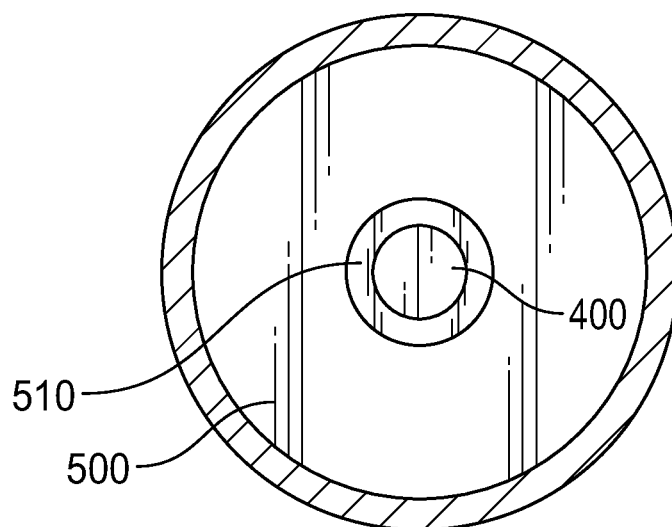


FIG. 12

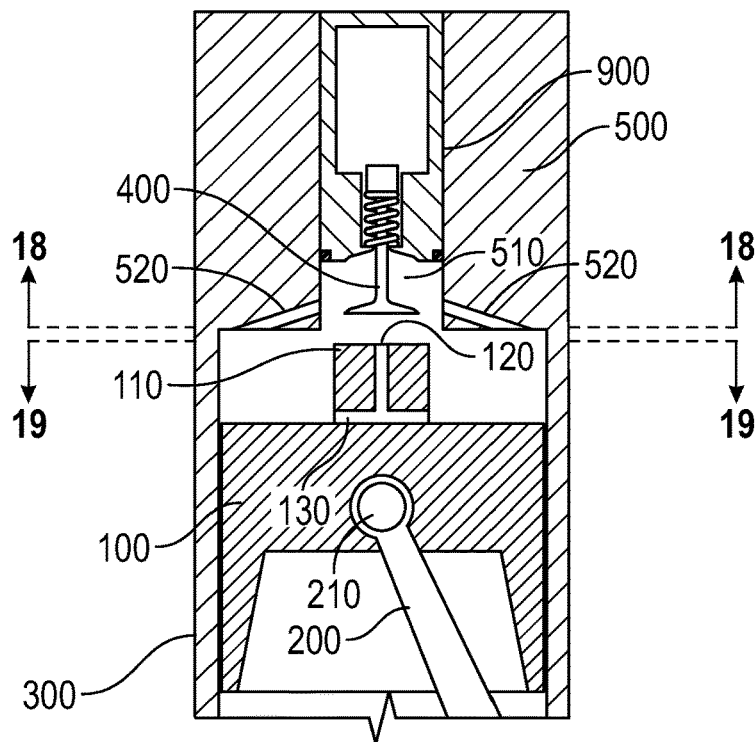


FIG. 13

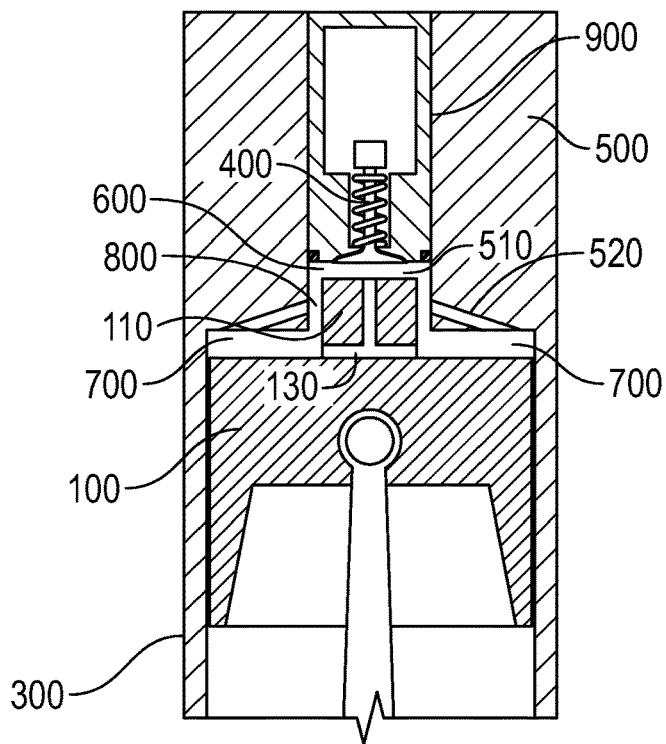


FIG. 14

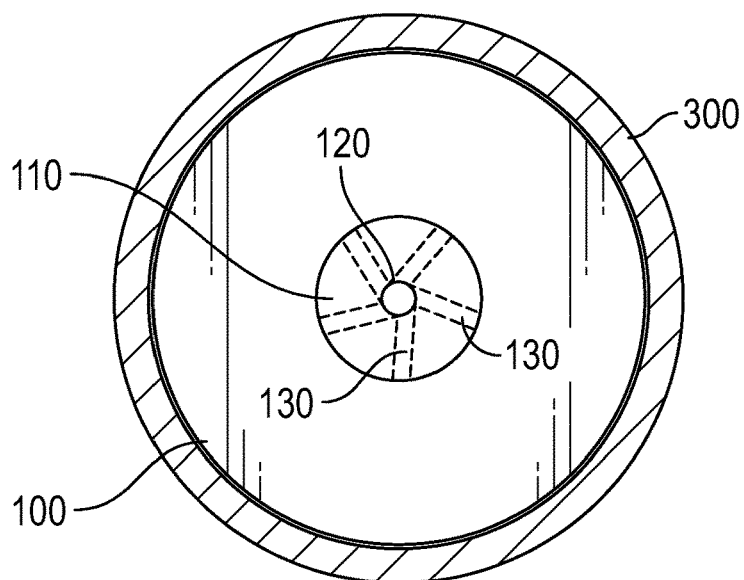


FIG. 15

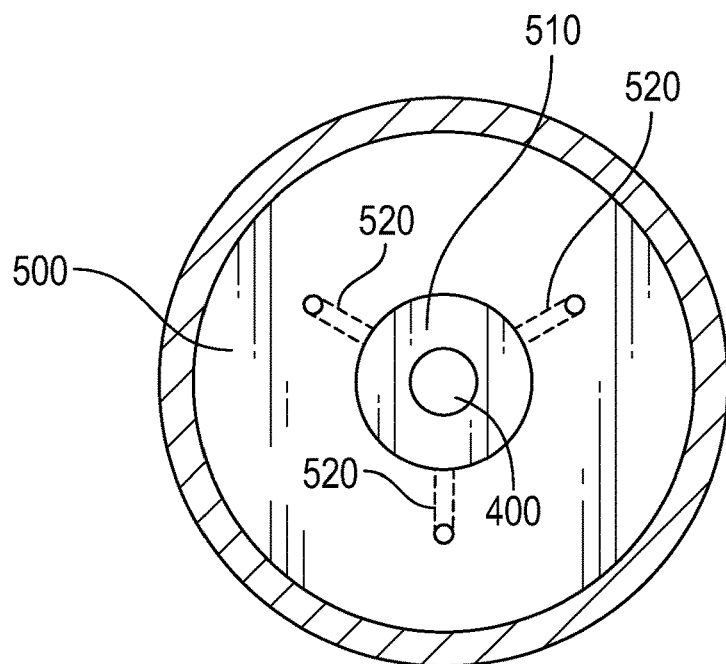


FIG. 16

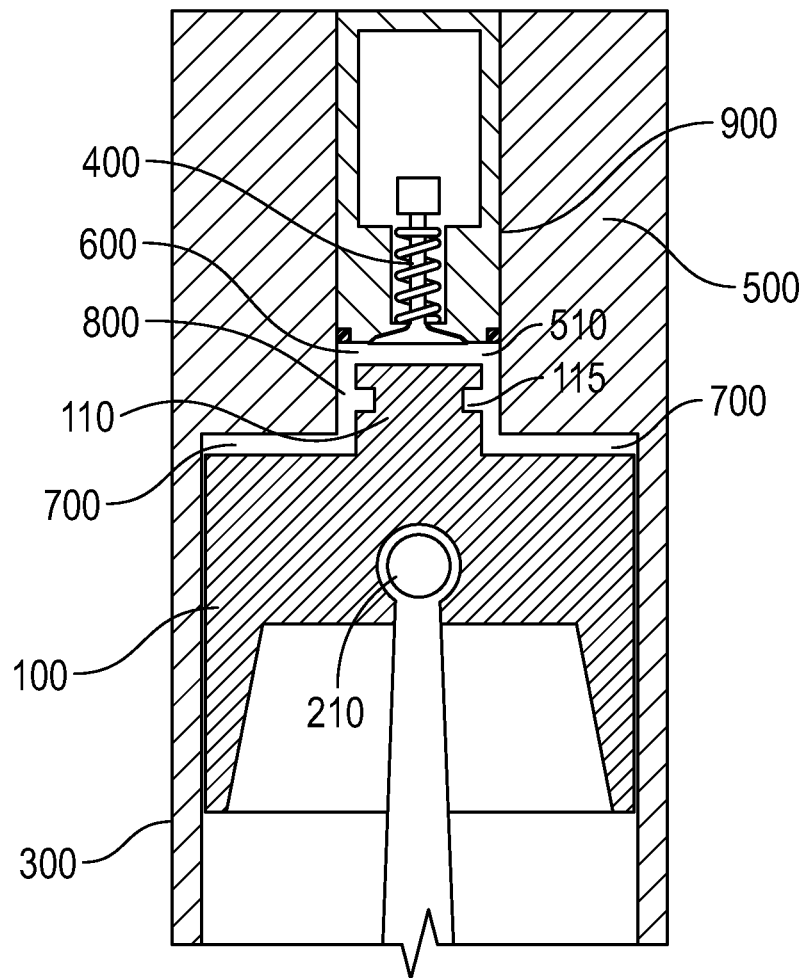


FIG. 17

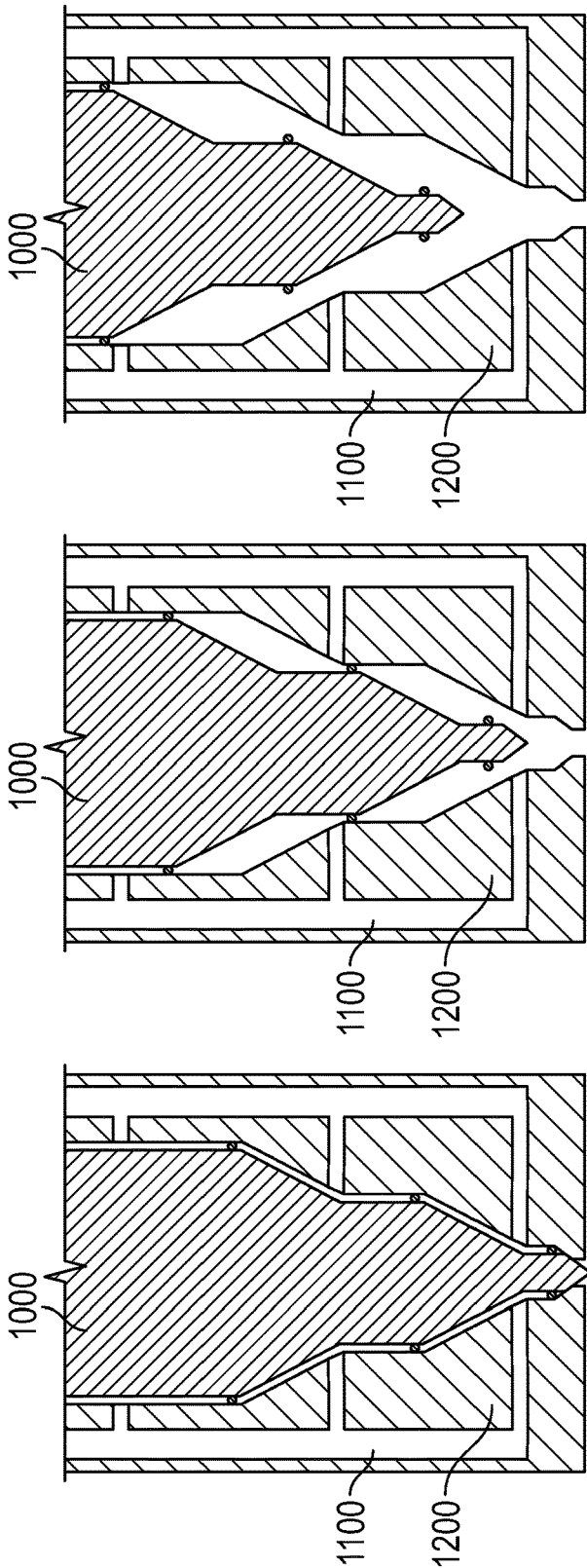


FIG. 18C

FIG. 18B

FIG. 18A

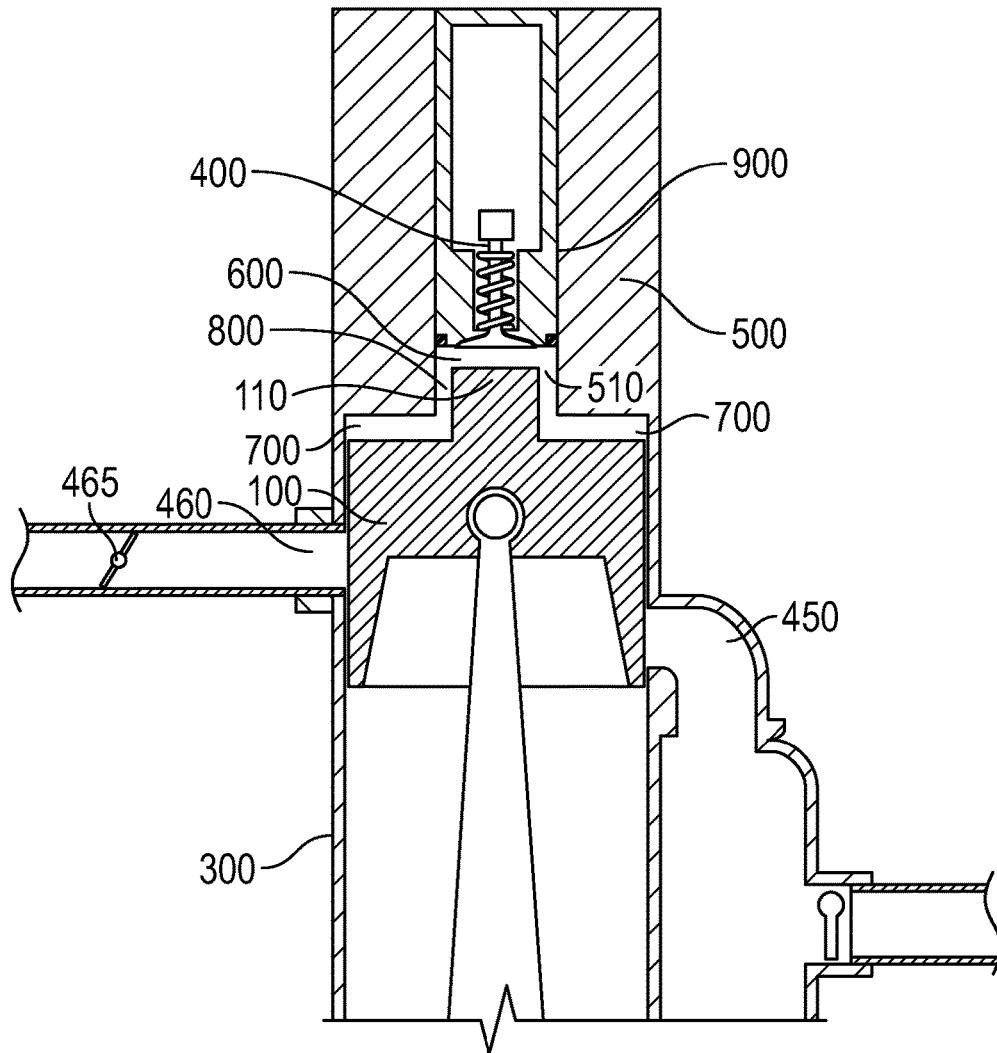


FIG. 19A

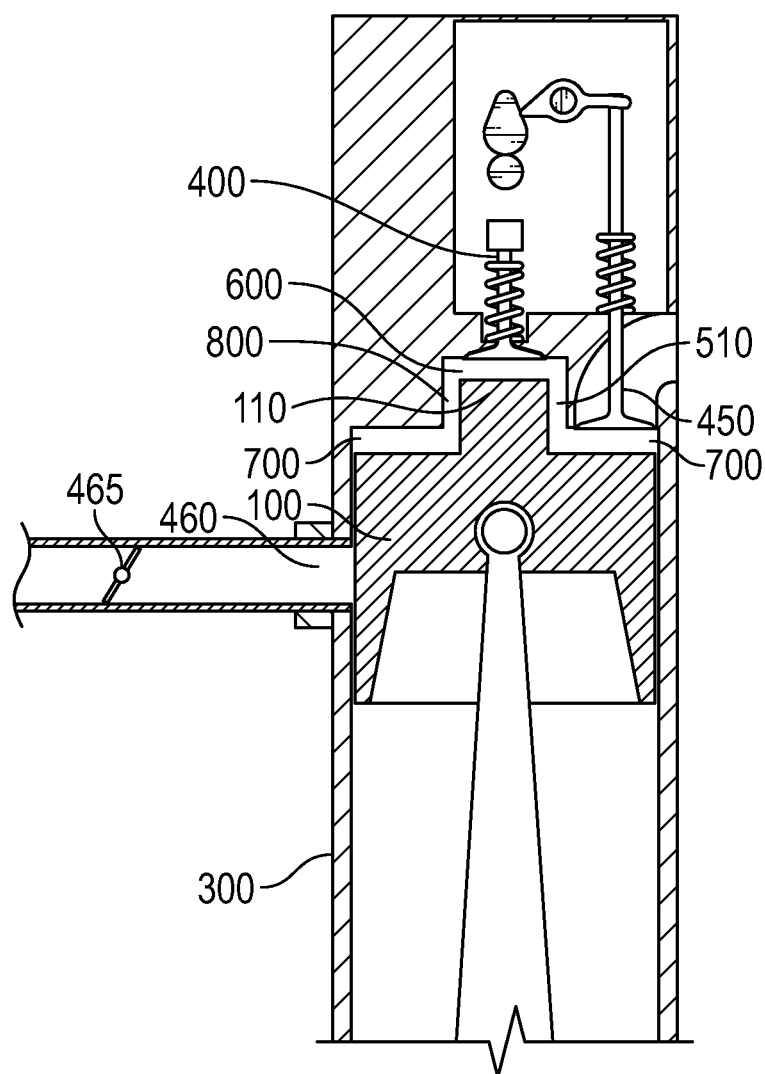


FIG. 19B

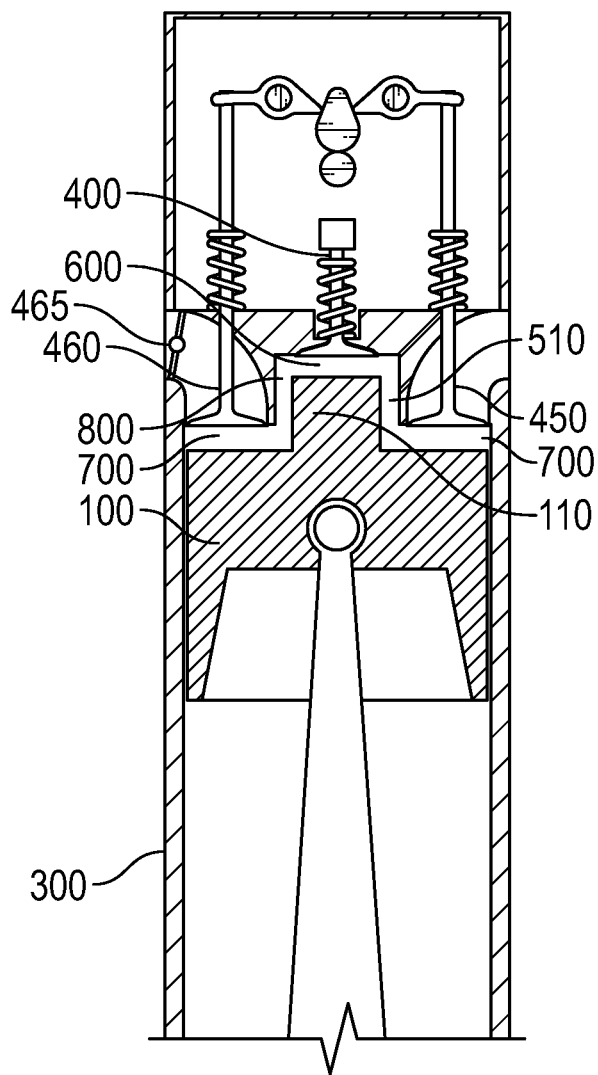


FIG. 19C

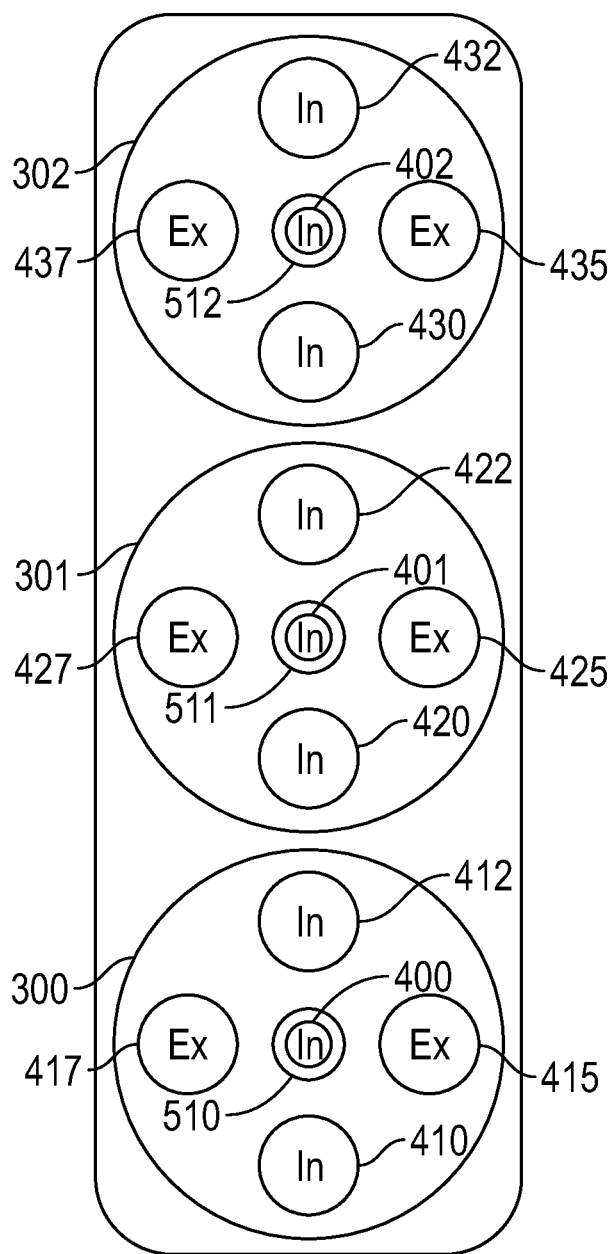


FIG. 20

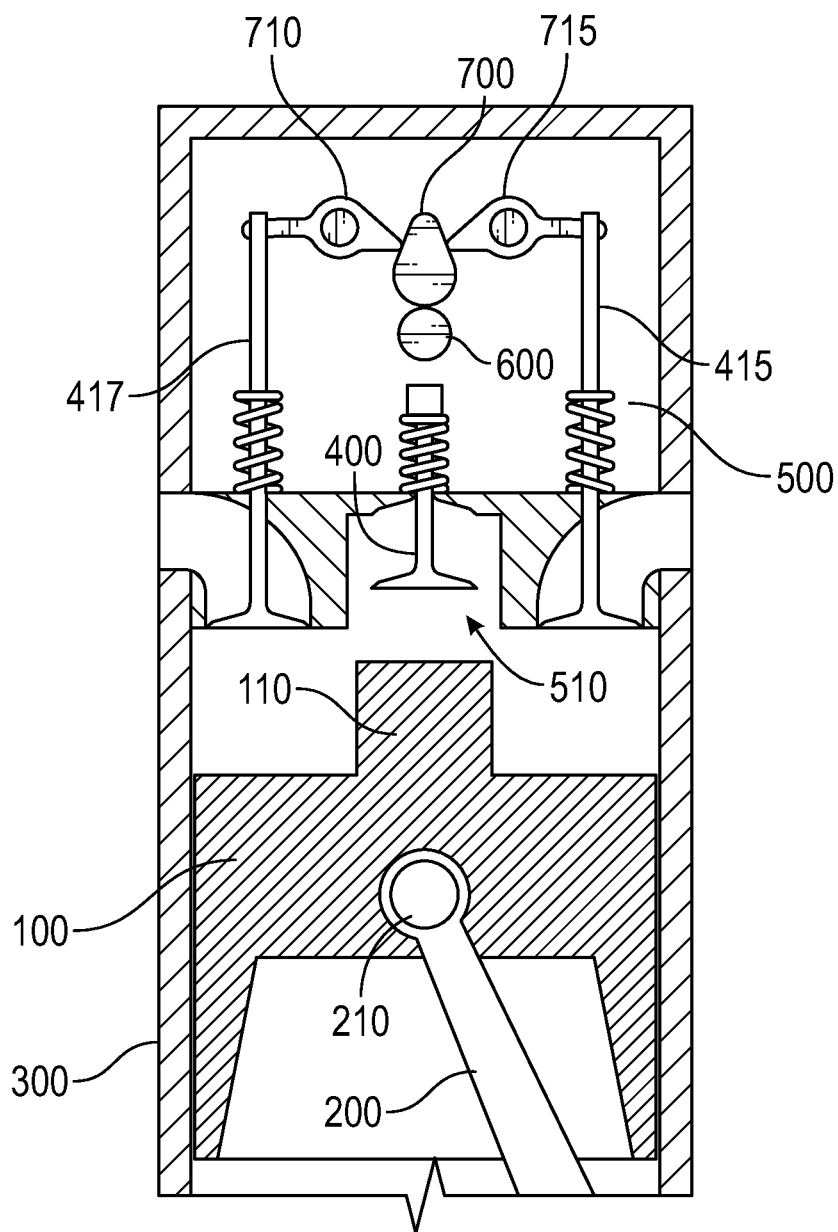


FIG. 21

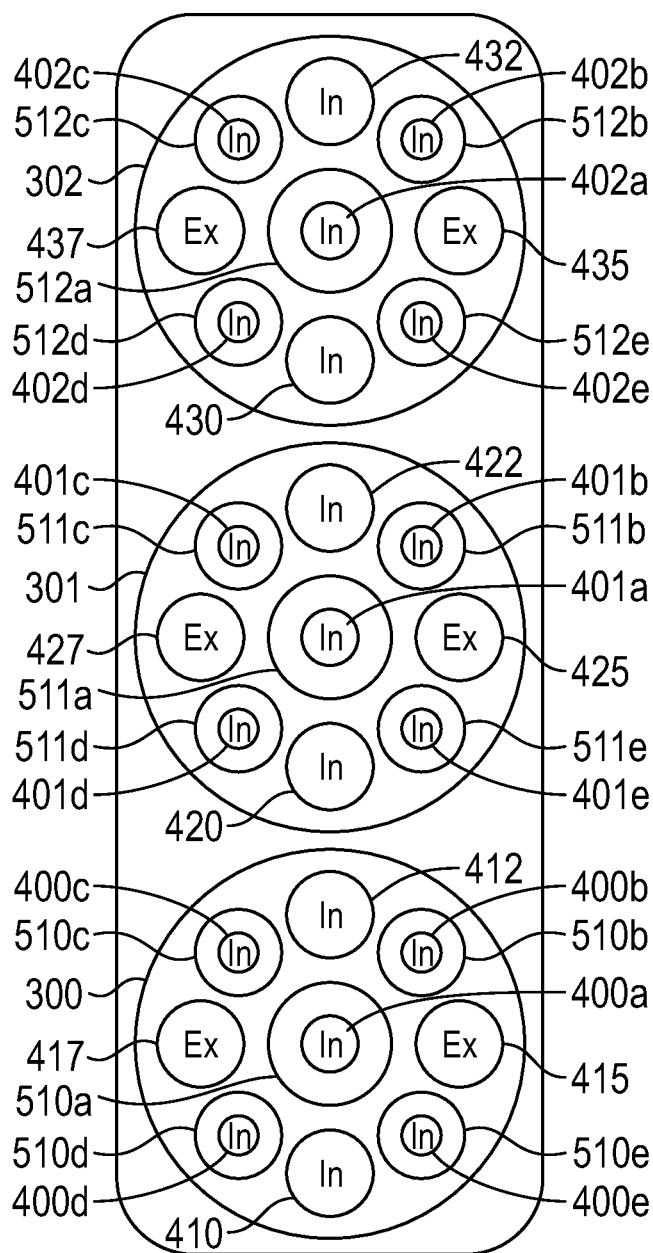


FIG. 22

SYSTEMS AND METHODS OF COMPRESSION IGNITION ENGINES

CROSS-REFERENCE TO RELATED APPLICATIONS

This application claims priority pursuant to 35 U.S.C. 119(e) to co-pending U.S. Provisional Patent Application Ser. No. 62/278,919, filed Jan. 14, 2016, and co-pending U.S. Provisional Patent Application Ser. No. 62/286,795, filed Jan. 25, 2016, and co-pending U.S. Provisional Patent Application Ser. No. 62/295,445, filed Feb. 15, 2016, and co-pending U.S. Provisional Patent Application Ser. No. 62/326,594, filed Apr. 22, 2016, and co-pending U.S. Provisional Patent Application Ser. No. 62/337,727, filed May 17, 2016, and co-pending U.S. Provisional Patent Application Ser. No. 62/344,230, filed Jun. 1, 2016, and co-pending U.S. Provisional Patent Application Ser. No. 62/417,897, filed Nov. 4, 2016, and co-pending U.S. Provisional Patent Application Ser. No. 62/442,336, filed Jan. 4, 2017, the entire disclosures of which are incorporated herein by reference.

FIELD OF THE INVENTION

The present inventive concept relates generally to apparatuses, systems and methods for achieving compression ignition (and/or spark-assisted or fuel-assisted compression ignition) in an internal combustion engine. More particularly, the present inventive concept is concerned with improved apparatuses, systems and method for utilizing multi-zoned combustion chambers (and/or multiple combustion chambers) for achieving compression ignition (and/or spark-assisted or fuel-assisted compression ignition) in an internal combustion engine. In addition, the present inventive concept is concerned with improved apparatuses, systems and methods for achieving and/or controlling compression ignition (and/or spark-assisted or fuel-assisted compression ignition) in a “Siamese cylinder” internal combustion engine.

BACKGROUND OF THE INVENTION

Virtually since the invention of the internal combustion engine, people have been trying to increase efficiency and lower emissions. Two common categories of internal combustion engines are spark ignition and compression ignition (as used herein, the phrase “compression ignition” includes, but is not necessarily limited to: Diesel/Stratified Charge Compression Ignition (SCCI), Homogeneous Charge Compression Ignition (HCCI), Homogenous Charge Ignition (HCI), Homogeneous Charge with Spark Ignition (HCSI), Gas Direct Compression Ignition (GDCI), diesel and other fuels, as well as fuel blends, carbureted and/or injected as different types of fuel and fuel blend compression ignition, spark-assisted ignition, fuel-assisted ignition, etc.).

Spark ignition engines utilize a spark from a spark plug to ignite the combustion process of the air-fuel mixture within the combustion chamber of the engine. In contrast, compression ignition engines utilize temperature and density increases in the air-fuel mixture within the combustion chamber to auto-ignite the combustion process. Spark ignition engines typically have much lower efficiency than compression ignition engines. Because the flame propagates from the point of ignition (i.e. the spark), it results in incomplete combustion. In compression ignition engines, no flame front exists, instead because the combustion is initi-

ated by increased pressure, the ignition is uniformed, and/or takes place, within multiple places within the combustion chamber, causing nearly simultaneous/instant ignition throughout the entire air-fuel mixture and resulting in more complete combustion. Conventional compression ignition engines must be carefully designed to provide for combustion just before top dead center, taking into account the timing of the fuel injected (typically, direct injected to control combustion cycle) into the combustion chamber, to avoid catastrophic damage to the engine if combustion occurs too early.

Due to the nearly instantaneous ignition of the entire air-fuel mixture within the combustion chamber of a compression ignition engine, an enormous amount of pressure is created within the combustion chamber all at once, as opposed to the more gradual increase in pressure that would be created as the flame propagates through the combustion chamber of a spark ignition engine. This immediate pressure increase is particularly high in homogeneous charge compression ignition (HCCI) engines. As such, engine manufacturers have been required to carefully control compression ignition engines such that the ignition occurs when the piston of the engine is at top dead center or moving down from top dead center. Otherwise, if the ignition occurs before the piston reaches top dead center, catastrophic engine failure will result (i.e. including, but not limited to, bent piston rods, collapsed piston skirts, blown head gaskets, etc.). Nevertheless, such precise control requirements necessitate extremely tight design parameters, limiting compression ratio and/or operating temperature for such engines. Too high a compression ratio can result in auto-ignition before top dead center. Reducing compression ratio, however, increases the temperature required to achieve auto-ignition, thus making the engine difficult to run in cold temperature environments.

U.S. Pat. No. 6,557,520 to Roberts, Jr., the entire disclosure of which is incorporated herein by reference, discloses a multi-zoned combustion chamber and method for combustion control in compression ignition engines that helps to control the immediate combustion pressure surge created in a compression ignition engine. Roberts, Jr. physically segregates the combustion chamber into multiple smaller, sealed, chambers (e.g. a primary chamber and at least a secondary chamber, as well as possibly a tertiary, or more subsequent chambers) through a stepped shaped design of the piston and cylinder head. Specifically, referring to FIG. 1, Roberts, Jr. discloses a cup-shaped piston **140** that has a central recess **141** surrounded by a circumferential protruding wall **142** portion of the piston. The cylinder head **132** of Roberts, Jr. is configured to matingly receive the cup-shape of the piston and has a central protuberance **133** surrounded by a circumferential recess **134**. The central recess **141** of the piston is adapted to slidably receive the central protuberance **133** of the head, and the circumferentially protruding wall **142** is adapted to be slidably received between the piston cylinder **130** and the central protuberance **133** and the recess **134**. FIGS. 2-8 illustrate the multiphase sequence of the internal combustion processes of the engine of Roberts, Jr., in which combustion is initiated in the primary chamber **143** while delaying combustion in the secondary chamber **144**.

FIG. 2 illustrates a first phase, which begins after a normal induction stroke, in which air is introduced into the combustion chamber **146**. Fuel is delivered and mixed into the combustion system through valve **41** and/or fuel injector **62**.

FIG. 3 illustrates a later, second phase in the compression stroke of the combustion chamber **146**. This phase illustrates

3

the initiation of chemical reactions within the unburned fuel/air masses **150**, **151** in the primary chamber **143** and the secondary chamber **144** due to compression heating. At this phase, the combustion chamber **146** is separated into two individual combustion chambers (the primary chamber **143** and the secondary chamber **144**) due to the design and motion of the piston and the design of the combustion chamber.

FIG. 4 illustrates a third phase where the fuel/air mass **150** trapped within the primary chamber **143** undergoes a compression ignition process. When compression ignition is undertaken, rapid combustion of the fuel/air mass **150** in the primary chamber **143** occurs. The size of the primary chamber **143** modulates the amount of energy trapped in the primary chamber **143** so that when the fuel/air mass **150** ignites, the pressure and temperature that is achieved can be controlled through design. The pressure required to ignite the fuel/air mass **150** is a function of thermodynamic interaction. The primary chamber **143** and the secondary chamber **144** have different compression ratio values, so that the fuel/air mass **151** within the secondary chamber **144** will not auto-ignite due to compression from the piston.

FIG. 5 illustrates a fourth phase where the compression ignition process proceeds to a rapid combustion process within the primary chamber **143**. Since the primary chamber **143** is being utilized as an ignition control for the secondary chamber **144**, the timing after TDC is not necessary.

FIG. 6 illustrates a fifth phase where the fuel/air mass **150** has been converted to a high pressure, high temperature, combusting gas **150A** within the primary chamber **143**. In Roberts, Jr., the fifth phase occurs after TDC, when the piston **140** is moving in the direction of a down stroke **44**. In this fifth phase, the combusting gas **150A** continues to expand and remains segregated from the remaining fuel/air mass **151** (or remaining combustible gas) in the secondary chamber **144**.

FIG. 7 illustrates a sixth phase where the piston **140** has moved to a predetermined position where segregation of the primary chamber **143** and secondary chamber **144** is eliminated. The sixth phase occurs after TDC, as the piston continues to move in the direction of a down stroke **44**. In this phase, combustion of the remaining fuel/air mass **151** in the secondary chamber **144** is initiated. FIG. 7 shows the combusting gas **150A** from the primary chamber **143** thermodynamically communicating with the remaining fuel/air mass **151** of the secondary chamber **144** and causing it to be converted into a remaining combusting gas **151A**. After the primary chamber **143** and secondary chamber **144** have been desegregated and the combusting gas **150A** of the primary chamber **143** is allowed to communicate with the secondary chamber **144**, the combusting gas **150A** in the primary chamber **143** and the thermodynamic state of the primary chamber **143** is used as the ignition source for the remaining fuel/air mass **151** in the secondary chamber **144**.

FIG. 8 illustrates a seventh phase where all of the remaining fuel/air mass **151** of the secondary chamber **144** has been ignited and converted into a combusting gas **151A**. Ignition of the secondary chamber can be by compression ignition, direct flame contact, or a combination thereof.

The multi-phase combustion process of Roberts, Jr. allows the combustion process to be initiated by compression caused by the piston, without requiring precise control of the reaction to ensure it occurs when the piston is at or past top dead center. Instead, the segregation of the combustion chamber allows the piston to cause auto-ignition only in the primary chamber, which has a higher compression ratio than the secondary chamber. The relatively small

4

volume of the primary combustion chamber reduces the downward force on the piston, reducing the risk of damage to the engine even if the piston is in its upstroke. The remaining combustion does not occur until the piston is in its down stroke and the seal/barrier (created by the piston and head shape) between the primary and secondary combustion chamber is removed.

Despite the benefits provided by the multi-phase combustion process, the apparatus and method of Roberts Jr. suffer from several drawbacks. For example, the design of the piston central recess **141**, and circumferential recess **134** of the head, create trap volume areas in which it is difficult to obtain a homogeneous air-fuel mixture (as used hereafter meaning exhaust, Exhaust Gas Recirculation (EGR), intake air and fuel are all mixed in a homogeneous fashion). This can significantly reduce the performance and efficiency of the engine. In addition, the central recess **141** of the piston lowers the position of the wrist-pin connecting the piston to the rod. Such a design increases likelihood of engine failure due to decreased control of piston cradle rock/piston slap as well as reduced strength at an area of significant stress on the piston. Moreover, the physical seals that are created between the primary and secondary (tertiary, on so on) combustion chambers, compound the difficulty in creating a homogeneous air-fuel mixture, making it difficult to control engine knock. Therefore, it would be beneficial to provide systems and methods for achieving multi-phase compression ignition that reduce trap volume, reducing engine knock, and/or decrease likelihood of engine failure, to have control over compression ignition at a multitude of ranges of RPM's, temperatures and/or multiple loads (with and without boost—e.g. supercharge, turbo, etc.).

In addition, the use of compression ignition in "Siamese cylinder" engines has been difficult or impossible to control. "Siamese cylinder" engines are multi-cylinder engines in which the engine cylinders are arranged in such a way that they do not have channels in the cylinder walls between adjacent cylinders for water or other coolant to circulate. Such arrangements are typically used when it is desirable to have an engine block of limited size or when the stability of the cylinder bores is of concern (such as in racing engines). The lack of coolant results in hot spots at the locations in which adjacent cylinders intersect with one another, which makes control of compression ignition difficult. Therefore, it would be beneficial to provide apparatuses, systems and methods for achieving and/or controlling compression ignition (including spark-assisted and/or fuel-assisted compression ignition) in a "Siamese cylinder" internal combustion engine.

SUMMARY OF THE INVENTION

The present inventive concept comprises apparatuses, systems and methods for achieving multi-phase compression ignition in a manner similar to that described in Roberts, Jr., while also reducing/minimizing/eliminating trap volume, reducing carbon buildup, reducing engine knock, and/or decreasing likelihood of engine failure that is inherent in Roberts, Jr.'s designs, and providing control over compression ignition at a multitude of ranges of RPM's, temperatures and/or multiple loads (with and without boosting of intake charge of any kind). The inventive concept includes a stepped piston that includes a generally central protuberance (or multiple protuberances) that mates with a central recess (or recesses) in the cylinder head to physically segregate the combustion chamber of the engine into multiple smaller chambers (e.g. a primary chamber and at least

5

a secondary chamber, as well as possibly a tertiary, or more subsequent chambers). In some embodiments, although the stepped piston physically segregates the combustion chamber into multiple chambers, the separate chambers are not physically sealed off from one another, allowing fluid communication there between. In some such embodiments, the fluid communication between combustion chambers is controlled through a multiphasic dynamic compression ignition combustion process in which there is constant fluid communication between the primary and secondary (as well as tertiary and so forth) combustion chambers/ignition sources. In such embodiments, the multiphasic dynamic process aids in creating a homogenous air-fuel mixture and slows down ignition to allow the piston to move past top dead center before full ignition occurs (e.g. throughout the entire combustion chamber including primary, secondary, etc.).

It will be appreciated that various embodiments of the instant inventive concept will be utilized in connection with any type of compression ignition engine technology now known or hereafter discovered, including, but not limited to, Diesel/Stratified Charge Compression Ignition, Homogeneous Charge Compression Ignition, Homogeneous Compression Ignition (HCI), Homogeneous Charge with Spark Ignition, Gas Direct Compression Ignition, diesel and other fuels, as well as fuel blends, carbureted and/or injected as different types of fuel and fuel blend compression ignition, spark-assisted ignition, fuel-assisted ignition, and the like. Embodiments of the instant inventive concept include both two cycle and four cycle technologies, Miller cycle, Atkinson cycle, rotary engine, modified piston engines (e.g. offset elliptical pistons or other convoluted shapes of pistons), turbine fans, opposed piston, Scuderi or other split cycle engines, and other engine technologies now known or hereinafter developed. In some two cycle embodiments, intake and exhaust valves are included in the head. In other embodiments, the exhaust is located on the side and the piston acts as the exhaust valve to control exhaust. In some preferred embodiments, at least one intake valve is located in the head to help minimize trap volume. In some embodiments, a butterfly (or other suitable valve assembly) is included within the exhaust. In such embodiments, the valve is utilized to trap heat and/or exhaust gas inside the combustion chamber to suffocate (or partially suffocate) the next combustion cycle and assist with compression ignition in the engine. In some such embodiments, the trapped heat functions as a catalyst for the next combustion cycle. It will be appreciated that in various embodiments the butterfly exhaust valve will be opened or closed or adjusted at any given time to control the compression ignition process. In some embodiments, the butterfly valve is opened further at higher RPM's and closed more at lower RPM's. It will be appreciated that the butterfly exhaust valve of the inventive concept will be utilized with any of the engine embodiments herein (such as the multiphasic dynamic compression ignition combustion engines disclosed herein), alone or in combination with other features, as well as in connection with other two cycle, four cycle or other engine types of the prior art and hereinafter discovered (such as engines that do not utilize multiphasic dynamic compression ignition combustion).

Although not shown, various embodiments of the inventive concept include fuel injectors located at various locations about the combustion chamber to provide the desired homogenous air/fuel/EGR mixture throughout the chamber. In some embodiments injectors are located at varying angles and orientations to provide desired mixtures of fuel/air into the combustion chamber. In some embodiments, no fuel is

6

injected directly into the combustion chamber, instead the fuel is mixed into the air in a pre-intake area (e.g. prior to entering the combustion chamber through the intake valve(s)). In various embodiments, the air-fuel mixture is accomplished via high or low pressure port, throttle body (including upstream linear EGR connected into throttle body, and/or downstream fuel injection to assist in better atomization of air/fuel and/or EGR blending), sequential, assisted port, direct or indirect injections, or any combination thereof. In still other embodiments, carburetor(s) is/are used to accomplish the air-fuel mixture, or a portion thereof. In some embodiments, a stratified cloud injection for throttle body is utilized, in which a fuel pressure of 90 PSI or higher is created through electric or mechanical pumps to create a fine mist with high atomization capability. In other low pressure injection embodiments, a fuel pressure of 10 PSI or higher is utilized. Some embodiments include single, twin, triple, quads, etc. throttle high pressure cloud throttle body. The high pressure atomizes the fuel to result in improved homogenous fuel-mix for HCCI. In some embodiments, the inventive concept utilizes high pressure fuel injection via a multitude of nozzles to create the cloud injection.

In some embodiments standard throttle control is utilized to control the intake gases of the engine. In some embodiments, a butterfly throttle control is utilized to restrict intake gases. In some embodiments throttle body with a butterfly assembly and/or carburetor with adjustable lean/rich control function to control the amount of air/fuel entering the engine intake is utilized. In some embodiments, an electronic control is utilized in connection with the enrichment needle to control the lean/rich function and control the amount of fuel in the intake at any given time. In some embodiments, the electronic control of the lean/rich function is part of a carburetor. In some embodiments, a carburetor includes throttle control of intake gases.

In some embodiments, spark plugs or glow plugs are utilized to aid in ignition. For example, in some embodiments, spark plugs are utilized in low temperature, low RPM or engine startup situations. The angle and location of the spark plug(s) varies based on desired performance of the engine. In some embodiments, the spark plug(s) is positioned at a 45 degree angle to the piston to prevent interference with intake valves. In some embodiments, spark plugs are located in the primary chamber. In some embodiments, spark plugs are located in the secondary chamber (tertiary, etc.). In some embodiments, spark plugs are located in both primary and secondary chambers.

Some embodiments of the present inventive concept comprise apparatuses, systems and methods for achieving multi-phase compression ignition in a "Siamese cylinder" internal combustion engine in a manner similar to that described above. In some embodiments, the inventive concept includes a stepped piston that includes a generally central protuberance that mates with a central recess in the cylinder head to physically segregate the combustion chamber of the engine into multiple smaller chambers (e.g. a primary chamber and at least a secondary chamber, as well as possibly a tertiary, or more subsequent chambers). In some embodiments, although the stepped piston physically segregates the combustion chamber into multiple chambers, the separate chambers are not physically sealed off from one another, allowing fluid communication there between. In some such embodiments, the fluid communication between combustion chambers is controlled through a multiphasic dynamic compression ignition combustion process in which there is constant fluid communication between the primary and secondary (as well as tertiary and so forth) combustion

chambers/ignition sources. In such embodiments, the multiphase dynamic process aids in creating a homogenous air-fuel mixture and slows down ignition to allow the piston to move past top dead center before full ignition occurs (e.g. throughout the entire combustion chamber including primary, secondary, etc.).

The foregoing and other objects are intended to be illustrative of the inventive concept and are not meant in a limiting sense. Many possible embodiments of the inventive concept may be made and will be readily evident upon a study of the following specification and accompanying drawings comprising a part thereof. Various features and subcombinations of inventive concept may be employed without reference to other features and subcombinations. Other objects and advantages of this inventive concept will become apparent from the following description taken in connection with the accompanying drawings, wherein is set forth by way of illustration and example, an embodiment of this inventive concept and various features thereof.

BRIEF DESCRIPTION OF THE DRAWINGS

A preferred embodiment of the inventive concept, illustrative of the best mode in which the applicant has contemplated applying the principles, is set forth in the following description and is shown in the drawings.

FIG. 1 shows a cross-sectional view of a multi-zone combustion chamber compression ignition engine of the prior art.

FIGS. 2-8 illustrate the multiple phases of combustion in the prior art engine of FIG. 1.

FIG. 9 shows a cross-sectional view of a multi-zone combustion chamber compression ignition engine of an embodiment of the instant inventive concept. In FIG. 9, the piston is positioned such that the combustion chamber is not segregated. In other words, the primary and secondary (and any subsequent) combustion chambers are all in complete fluid communication with each other.

FIG. 10 shows a cross-sectional view of the engine of FIG. 9, with the piston positioned such that the combustion chamber is segregated into a primary combustion chamber and a secondary combustion chamber.

FIG. 11 is a top cross-sectional plan view of the piston of FIGS. 9 and 10 taken along section line 11-11 of FIG. 9.

FIG. 12 is a bottom cross-sectional plan view of the head of FIGS. 9 and 10 taken along section line 12-12 of FIG. 9.

FIG. 13 shows a cross-sectional view of a multi-zone combustion chamber compression ignition engine of another embodiment of the instant inventive concept. In FIG. 13, the piston is positioned such that the combustion chamber is not segregated. In other words, the primary and secondary (and any subsequent) combustion chambers are all in complete fluid communication with each other. Furthermore, in FIG. 13, ports are included in the piston to provide for multiphase dynamic compression ignition combustion. In addition, ports are included in the head to aid in creating a homogenous air-fuel mixture by creating spin within the combustion chamber(s) before, after and/or at auto-ignition.

FIG. 14 shows a cross-sectional view of the engine of FIG. 13, with the piston positioned such that the combustion chamber is segregated into a primary combustion chamber and a secondary combustion chamber. As is shown in FIG. 14, even when the combustion chambers are segregated, they are not sealed off from each other.

FIG. 15 is a top cross-sectional plan view of the piston of FIGS. 13 and 14 taken along section line 19-19 of FIG. 13.

FIG. 16 is a bottom cross-sectional plan view of the head of FIGS. 13 and 14 taken along section line 18-18 of FIG. 13.

FIG. 17 shows a cross-sectional view of an alternate embodiment of the engine of FIGS. 9 and 10, with the piston positioned such that the combustion chamber is segregated into a primary combustion chamber and a secondary combustion chamber.

FIGS. 18A, 18B, and 18C show representative cross-sectional plan views of a multi-staged injector of an embodiment of the inventive concept.

FIG. 19A shows embodiment of two cycle engine of the inventive concept in which the piston functions as the exhaust and intake valves, and further including a butterfly valve within the exhaust outlet to trap heat and exhaust gas inside the combustion chamber to aid in compression ignition. FIGS. 19B and 19C show other embodiments of engines of the inventive concept that include a butterfly valve within an exhaust outlet to trap heat and exhaust gas inside the combustion chamber to aid in compression ignition.

FIG. 20 shows a representative top plan view of a three cylinder Siamese cylinder engine, depicting the cylinder and valve arrangement of an embodiment of the inventive concept.

FIG. 21 shows a front cross-section elevation view of the engine of FIG. 20.

FIG. 22 shows a representative top plan view of another embodiment of a three cylinder Siamese cylinder engine that includes multiple protuberances of the inventive concept.

DETAILED DESCRIPTION OF A PREFERRED EMBODIMENT

As required, detailed embodiments of the present inventive concept are disclosed herein; however, it is to be understood that the disclosed embodiments are merely exemplary of the principles of the inventive concept, which may be embodied in various forms. Therefore, specific structural and functional details disclosed herein are not to be interpreted as limiting, but merely as a basis for the claims and as a representative basis for teaching one skilled in the art to variously employ the present inventive concept in virtually any appropriately detailed structure.

Referring to FIGS. 9 through 12, an exemplary embodiment of the inventive concept includes a piston 100 that is configured to reciprocate axially within a bore of a cylinder 300 such that the piston is moveable between a top position and a bottom position. A head 500 is coupled to a top of the cylinder such that a top surface of the piston is in close proximity to a bottom surface of the head when the piston is in the top position. In some embodiments, the bottom surface of the head and the top surface of the piston are configured to define a specific volume of one or more voids positioned between the piston and the head when the piston is in the top position.

In some embodiments, a generally central protuberance 110 extends from the top of the main body of the piston such that the top surface of the piston is defined partially by a top surface of the main body of the piston and partially by a top surface of the protuberance. In some such embodiments, the cylinder head 500 includes a generally central recess 510 that is configured to matingly receive the protuberance 110 of the piston when the protuberance is in an engaged configuration. The central protuberance 110 of the piston is adapted to be slidably received in the central recess 510 of the head as it moves between an initial engagement con-

figuration and a full engagement configuration, the full engagement configuration of the protuberance coinciding with the top position of the piston. As the piston moves from the bottom position toward the top position, often referred to as top dead center, the central protuberance **110** of the piston moves from a disengaged configuration to the initial engaged configuration, which coincides with the protuberance of the piston being first received by the recess of the head. As the piston continues to move towards the top position, the protuberance slides into the central recess **510** of the head, creating a primary combustion chamber **600** and a secondary combustion chamber **700**. The primary combustion chamber **600** is defined by the void between a top surface of the protuberance and a top surface of the recess. The secondary combustion chamber **700** is defined by one or more void between a top surface of the main body of the piston and a bottom surface of the head.

In some embodiments, the respective volumes of primary combustion chamber **600** and secondary combustion chamber **700** are designed such that the compression ratio of primary combustion chamber **600** is higher than that of secondary combustion chamber **700** (in other embodiments, the reverse is true). In that manner, auto-ignition of a fuel-air mixture can be obtained in the primary combustion chamber **600** either before, at, or after the piston reaches top dead center, without resulting in auto-ignition within the secondary combustion chamber **700**. As the piston moves away from the top position, the protuberance **110** moves from the engaged configuration towards the disengaged configuration in which the protuberance is displaced from the recess **510** of the head, allowing the pressure created by the combustion within the primary combustion chamber **600** to expand into the secondary combustion chamber **700**, initiating combustion, combustion ignition and/or ignition within the secondary combustion chamber **700**.

Referring to FIG. **10**, some embodiments define a gap **800** between an outer circumference of the protuberance **110** and an inner wall of the recess **510** when the protuberance is in the engaged configuration. In some such embodiments, one or more gap-filling mechanism, such as rings, is coupled to the protuberance **110** and/or secured within the recess **510** so as to prevent or otherwise inhibit fluid from flowing from through the gap **800**. In some such embodiments, the gap filling mechanism creates an air-tight seal between the primary combustion chamber **600** and the secondary combustion chamber **700** when the protuberance is in the engaged configuration. In other embodiments, however, gap filling mechanisms, such as rings (or another seal), are not utilized, as the size of gap **800** is designed to allow sufficient pressure to be created within primary combustion chamber **600** to create auto-ignition, without permitting sufficient pressure to escape through gap **800** to create ignition within secondary combustion chamber **700** while the piston is at the top position, prior to the piston being in its down stroke. In still some embodiments, as discussed below, the primary and secondary combustion chambers remain in constant fluidic communication with one another for the purposes of creating multiphase dynamic compression ignition combustion. In some embodiments, gap **800** is sufficient to provide such constant fluidic communication between the primary and secondary combustion chambers at all times during the piston stroke.

As is shown in FIGS. **9** and **10**, intake valve **400** is located within recess **510** of the cylinder head to reduce and/or eliminate trap volume (and/or rich air pockets, and/or unbalanced combustion between the primary and secondary chambers) within the combustion chamber, and to ensure a

homogenous air/fuel/EGR mix within the entire combustion chamber (primary and secondary chambers). It will be appreciated that in other embodiments, additional intake valves are included at other locations in which trap volume would otherwise exist and/or in which air/fuel/EGR mix is desired (such as in the secondary combustion chamber). For example in embodiments with tertiary or more combustion chambers, intake valves are included in each combustion chamber. It will further be appreciated that in some embodiments the intake valve **400** (and/or other intake valves) are opened during at least a portion of the exhaust stroke (and/or in some embodiments, during at least a portion of the power and/or compression strokes), to eliminate trap volume. In some such embodiments the valve is opened at the top of the exhaust stroke. In some embodiments, exhaust valves, not shown, are located within the secondary combustion chamber. Still in further embodiments, exhaust valves (not shown) are included in the recess **510** to help eliminate trap volume, and/or at other desired locations within the combustion chamber. It will be appreciated that by eliminating trap volume, the inventive concept helps to create equal air/fuel and exhaust EGR, hydrocarbons, carbon monoxide and maintain low NOx emissions. The inventive concept allows for 2 cycle scavenging that is not present in the prior art such as Roberts Jr. discussed above.

Referring to FIGS. **9** and **10**, the design of the piston **100**, with the protuberance **110** located at the center of piston **100**, allows a wrist-pin **210** to attach a rod **200** to the piston at a location of increased thickness of the piston (due to the protuberance). This increases strength at a location that otherwise is under increased stress. In addition, the relatively high connection on the piston allows for greater control of the piston and decreased piston slap as the piston moves up and down within the cylinder.

Referring to FIGS. **13** through **16**, some embodiments include one or more head port **520** defined by and extending through a portion of the head **500**. In some such embodiments, each head port **520** extends between the primary **600** and secondary **700** combustion chambers when the protuberance is in the initial engagement configuration. In some embodiments, the ports are designed to create a circulatory or spinning, and/or roll and/or tumble, airflow into the combustion chamber(s) as the piston **100** reciprocates within the cylinder to create a constant mixture of air/fuel. This helps to eliminate or otherwise minimize trap volume within the combustion chamber. In some embodiments, as is shown in FIGS. **13** through **16**, the protuberance **110** operates as a valve to close the head ports when the protuberance is in the fully engaged configuration. In some such embodiments, the head ports reopen as the protuberance moves away from the fully engaged configuration. In other embodiments, openings of the head ports are positioned within the recess such that primary chamber **600** remains in continuous fluidic communication with the secondary chamber **700** through at least some of the head ports **520** regardless of the position of the protuberance. In some embodiments, as shown in FIGS. **13** through **16**, ports **520** are shown at roughly 45 degree angles from top to bottom. It will be appreciated that other angles, sizes, shapes, lengths, etc. of ports **520** will be utilized in various embodiments to create the desired circulation within/between the combustion chambers. Moreover, the number and positions of the ports **520**, and exit/entrance angles will vary between embodiments to obtain the desired circulation. In some embodiments, gap **800** is sufficient to provide for constant fluidic communication between the primary chamber **600** and secondary chamber **700** at all times during the piston stroke.

In some embodiments, as shown in FIGS. 13 through 16, the protuberance defines one or more ports 130 extending from a top surface of the protuberance to a side surface of the protuberance. In some such embodiments, a single central port 120 extends axially into the protuberance from a center of the top surface of the protuberance and a plurality of lateral ports extend from the central port to a side surface of the protuberance. In some such embodiments, each lateral port extends at an angle relative to the central port such that the length of any pathway through the central port and any one of the lateral ports is the substantially the same distance as the length of a pathway through the central port and any one of the other lateral ports.

In some embodiments, as shown in FIG. 14, an opening for at least some of the lateral ports is positioned along the outer surface of the protuberance such that the lateral port is in fluid communication with the secondary combustion chamber 700 when the protuberance is in an engaged configuration, regardless of whether the protuberance is in the initial engaged configuration or the fully engaged configuration. In this manner, it is possible to maintain constant and continuous fluidic communication between the primary 600 and secondary 700 combustion chambers, aiding in multiphasic dynamic compression ignition combustion. In some embodiments, the ports are designed to create a circulatory or spinning airflow into the combustion chamber(s) as the piston 100 reciprocates within the cylinder. This helps to eliminate or otherwise minimize trap volume within the combustion chamber. In some embodiments, as shown in FIGS. 13 through 16, ports 120, 130 are shown at various angles from top to bottom and around the protuberance 110. It will be appreciated that other angles, sizes, shapes, lengths, etc. of ports 120, 130 will be utilized in various embodiments to create the desired circulation within/between the combustion chambers. Moreover, the number and positions of the ports 120 and 130, and exit/entrance angles will vary between embodiments to obtain the desired circulation. In some embodiments, as shown in FIG. 15, ports 130 come off port 120 generally tangentially, so as to help create a circulatory flow within the combustion chamber.

Referring to FIG. 17 a cross-sectional view of an alternate embodiment of the engine of FIGS. 9 and 10 is shown with the piston positioned such that the combustion chamber is segregated into a primary combustion chamber and a secondary combustion chamber. In the embodiment shown in FIG. 17, the protuberance 110 of the piston 100 includes a groove 115 around the circumference of protuberance 110. It will be appreciated that similar grooves and/or indentations are included in various embodiments of the invention similar to those discussed herein, including but not limited to the various embodiments shown with respect to FIGS. 1 through 16 above. In some embodiments multiple grooves/indentations are utilized. The grooves/indentations create friction to help create a velocity vortex/turbulence within the combustion chamber(s).

In some embodiments, initial ignition occurs in the primary chamber 600 prior to secondary ignition occurring in the secondary chamber 700. It will be appreciated that in other embodiments initial ignition occurs in the secondary chamber 700 and secondary ignition occurs in the primary chamber 600. In such embodiments the piston 100, the protuberance 110, the head 500, and the central recess 510 are configured such that a higher compression ratio is obtained in the secondary chamber 700 than in primary chamber 600.

In some embodiments, a housing for valve 400, and or another suitable structure is positioned within the recess 510

and is configured to vary the volume within the recess 510. In this way, the housing of valve 400 is capable of adjusting the compression ratio within the primary combustion chamber 600 to allow for varying level of performance and/or to accommodate various operating conditions. In some embodiments a piston arrangement similar to that shown in US Published Patent Application No. 2007/084428, the entire disclosure of which is incorporated herein by reference, is utilized to vary the volume within the recess 510. Referring to FIGS. 9 and 10, an exemplary variable compression ratio piston 900 houses valve 400, such that piston 900 is moveable between an open position and a closed position, thereby allowing the variable compression ratio piston 900 to vary the volume within the recess 510. In some embodiments, a variable compression ratio piston is hydraulic (a "Hydraulic Variable Compression-ratio Piston"), while in other embodiments the piston displacement is electro mechanical hydraulic, piezo-electro mechanical hydraulic, or any other form of displacement now known or hereafter developed. In some embodiments, the variable compression ratio piston is moved via an electric motor and screw gear assembly. In some such embodiments, the screw gear assembly adjusts the variable compression ratio piston up and down as engine RPM's go up and down. In some embodiments, the screw gear assembly is utilized for generally "slower" adjustments of the variable compression ratio piston, in which the variable compression ratio piston is maintained at a constant location for multiple strokes of the piston such that the variable compression ratio piston is not displaced to a different ratio each stroke. In some embodiments, the variable compression ratio piston is moved up and down via a connecting rod and cam assembly. Some such embodiments allow for much "faster" displacement of the variable compression ratio piston, thereby allowing for the variable compression ratio piston to be displaced to a different ratio each stroke. In some such embodiments, the variable compression ratio piston reciprocates every combustion cycle opposing or otherwise countering the reciprocating motion of the protuberance(s) of piston 100 of the inventive concept. Some such embodiments allow for maximum combustion in the primary combustion chamber, thereby generating energy to the crank through the valve train while allowing for precombustion.

It will be appreciated that in some embodiments, the variable compression ratio piston of the inventive concept is a separate structure from any valve, such that the variable compression ratio piston's sole function is to vary the volume within recess 510. In some embodiments, the variable compression-ratio piston includes an intake valve within or as part of the piston, such that the valve is displaced with the piston. In other embodiments, the valve is separate from the piston, such that the valve remains in a static location while the piston is displaced.

In some embodiments, the top surface of the protuberance 110 defines a concave shape. In some such embodiments, a top surface of the recess 510 defines a corresponding convex shape. In other embodiments, the top surface of the protuberance 110 defines a convex shape. In some such embodiments, a top surface of the recess 510 defines a corresponding concave shape.

In some embodiments a top surface of the main body of the piston 100 defines a convex shape while, in other embodiments, the top surface of the main body of the piston 100 defines a concave shape. In some such embodiments, a bottom surface of the head 500 defines a concave shape that is configured to correspond with a convex shape of the top surface of the main body of the piston. In other such

13

embodiments, the bottom surface of the head **500** defines a convex shape that is configured to correspond with a concave shape of the top surface of the main body of the piston. It will be appreciated that various embodiments of the inventive concept include all variation permutations of concave and convex shapes combined with each other along with generally flat surfaces in combinations with the concave and convex surfaces discussed above. In still further embodiments, non-curved shapes are utilized. For example, in some embodiments the protuberance includes a triangular or pyramidal shaped protrusion that engages an opposing triangular or pyramidal shaped recess. In other embodiments, a square or rectangular shaped nipple and recess is utilized. In some embodiments protuberance **110** includes a tapered shape such that width narrows from the top of protuberance **110** down to a narrower width toward bottom of protuberance **110**, at the point in which it intersects with the remainder of piston **100**. Such a tapered shape helps to reduce or prevent carbon buildup caused by interference with the cylinder head.

In some embodiments, various edges of the piston and/or head are filleted, chamfered or otherwise curved, to cause air to move and create a “donut” affect from blow-by of the primary piston and/or to help roll and tumble within the combustion chamber. For example, location **114** in FIG. **9** in some embodiments is filleted. In some embodiments, edge **104** is filleted. In some embodiments, edge **112** is filleted. In some embodiments edge **502** of head is filleted. In some embodiments, top surface **102** of piston **100**, surrounding protuberance **110** is concave in shape, e.g. to form a cup. In other embodiments, surface **102** is convex in shape.

It will be appreciated that the dimensions and shape of various protuberances **110** and corresponding central recesses **510** will vary in embodiments of the invention to provide the desired compression ratios and performance. In some embodiments in which multiple protuberances are utilized, the sizes and shapes vary to create different combustion chambers, e.g. primary, secondary, tertiary, etc. In such embodiments, the volumes will vary to provide for different compression ratios. In some embodiments, multiple protuberances will have different dimensions, but will have equal volumes to provide for equivalent compression ratios. In some embodiments, the central protuberance creates a primary combustion chamber, while other protuberances surrounding the central protuberance creating secondary (or tertiary, etc.) combustion chambers, and with the remainder of the combustion chamber (e.g. chamber **700**) being a tertiary (or subsequent) combustion chamber. In other embodiments, one or more protuberances surrounding the central protuberance will be the primary combustion chamber. It will further be appreciated that the bore and stroke, and other engine design parameters will vary to optimize, reduce or increase the design for different types of fuel.

Some embodiments of the inventive concept include an opposed piston design similar to those discussed above. In some such embodiments there is a single primary piston combined, in some embodiments, with the variable compression ratio piston discussed above that mates with the primary piston all within a single cylinder. In other embodiments, opposing pistons operate within separate opposing cylinders. In some such embodiments, variable compression ratio pistons are also utilized.

Embodiments of the inventive concept produce on demand flame and/or pressure propagation by creating compression ignition in the primary combustion chamber and

14

allowing the combustion to propagate to the secondary chamber as the piston moves away from the head, thereby increasing the volume.

It will be appreciated that embodiments of the multi-phase and multiphase dynamic compression ignition combustion engines disclosed herein will include varying numbers of cylinders (e.g. 1, 2, 4, 6, 8, etc.), and varying cylinder displacements. In some embodiments of the instant invention, a lower number of cylinders is utilized (e.g. 2 cylinders) to provide the same total engine displacement as what is typically found in higher number of cylinder engines (e.g. 8 cylinders). Because the inventive concept allows for complete compression ignition combustion and/or on demand flame and/or pressure propagation, the bore size of the cylinders can be scaled up and down as desired without any increase in emissions or decrease in efficiencies. In some embodiments, an opposed two cylinder structure is utilized to design a higher displacement (e.g. 4.0 liters, etc.) engine. Such a structure results in smaller overall size of the engine, as well as material and labor saving in manufacturing.

In some embodiments of the inventive concept a heat storage medium is included on the top of the piston, such as on top of the protuberance of the inventive concept, and/or on the cylinder head, such as near the center of the top of the cylinder. In some embodiments, the heat storage medium is designed to retain heat and become hotter than the walls of the cylinder or piston. In some such embodiments, the increased heat of the storage medium then dissipates into the compressed charge to assist with auto-ignition near the storage medium. In some embodiments, the heat storage medium is a relatively small piece of metal or other material having suitable thermodynamic properties to store and release heat to aid in auto-ignition as described. In some embodiments, the heat storage medium is a coating that is applied to a surface of the piston and/or the head.

In some embodiments pre-heaters are included on or in association with an intake manifold to heat up the air/fuel and/or water entering the engine to aid with startup and performance.

In some embodiments (see for example FIGS. **20** through **22**) an engine of the inventive concept includes offset intake and exhaust valves positioned around the central valve associated with the central protuberance of the piston and its associated recess. In some such embodiments, the exhaust valves are located on the right and left sides of the engine, and the intake valves are in-line with the crank. In some such embodiments, the exhaust ports extend up from the exhaust valves and out toward the right or left of the respective exhaust valves. The offset location of the exhaust valves to the intake valves allows for balanced temperature within the combustion chamber. The location of the valves in some embodiments allow for even greater balance and for heat from combustion to be pulled away from the center of the cylinder and the intake. In some embodiments, the heat pulled away is used to preheat the intake. In other embodiments, the heat is not used to preheat intake. Nevertheless, it will be appreciated that in other embodiments utilizing the offset valve design, the intake and exhaust valve locations are reversed. In some embodiments, the central valve functions as both an intake and an exhaust valve. In some embodiments, all valve locations are capable of being either intake, exhaust and/or both intake and exhausted depending upon the desired flow characteristics desired within the cylinder. In various embodiments, the order, duration, and/or timing of each valve opening and closing varies and is designed to achieve desired flow characteristics within the cylinder. It will be appreciated that the offset valve design of

15

the inventive concept will be utilized in various embodiments with compression ignition as well as conventional ignition engines.

Referring to FIGS. 18A, 18B and 18C, some embodiments of the inventive concept include a multi-stage direct injector. The injector includes a “stepped” injector pin that is pulled up from its seat a small amount to open a first stage that allows a first lowest amount of flow. Referring to FIG. 18A, the injector pin 1000 is in a seated position within housing 1200, in which no fluid flow will occur. FIG. 18B shows the injector pin 1000 after it has moved from the seated position to open a first stage of fluid ports 1100. As the injector is pulled further up, it opens successively larger holes through its stepped design to open second, third, fourth, fifth, etc. stages, increasing the amount of flow progressively at each stage. FIG. 18C shows the injector pin 1000 after it has moved from the first stage of FIG. 18B to a second stage in which additional fluid ports 1100 have been open. As is shown in FIG. 18C, a third stage of fluid ports 1100 remain closed by injector pin 1000. In some embodiments, O-rings are included along each stage of the injector to improve sealing. In the embodiments shown in FIGS. 18A, B and C, a single fuel/fluid line is shown feeding the injector. In other embodiments, each stage of the injector is fed by a separate fuel line. In this manner, the injector is utilized in some embodiments to feed different fuels types or other fluids through each stage. For example, in some embodiments (such as in a drag car), a first stage injects alcohol, a second stage injects a first stage of nitrous, and third stage injects a second stage of nitrous. In some embodiments, the injector of the inventive concept is utilized in connection with a carbureted engine, while in other embodiments it is utilized as part of a fuel injection system. In some embodiments, the injector of the inventive concept is utilized on a turbine fan. In other embodiments, the injector is utilized as a plastics injector, e.g. for multiple-stage injection molding of plastics. In still other embodiments, the injector is utilized as an oil injector.

Referring to FIGS. 19A, B, and C, various embodiments of engines of the inventive concept are shown including a butterfly valve 465 designed to trap selectively heat and/or exhaust gases within the combustion chamber to aid in compression ignition. FIG. 19A shows an embodiment of a two cycle engine of the inventive concept in which the piston functions as the exhaust and intake valves selectively block intake 450 and exhaust outlet 460, and further including a butterfly valve 465 within the exhaust outlet 460 to trap selectively heat and exhaust gas inside the combustion chamber to aid in compression ignition. Intake valve 400 is located within recess 510 of the cylinder head to reduce and/or eliminate trap volume within that portion of the combustion chamber. In some embodiments of the engine shown in FIG. 19A, in which a single exhaust port is present, the butterfly valve 465 is never 100% closed. Instead, the valve is partially closed to trap part of the exhaust and preheat the intake. In other embodiments, in which multiple exhaust ports, or lines, are present, the butterfly valve 465 is capable of closing a portion of the exhaust 100% to provide the desired flow restriction and/or preheating affect. FIG. 19B shows the butterfly valve 465 in an embodiment in which the piston functions as the exhaust valve and in which a separate intake valve 450 is utilized along with valve 400. FIG. 19C shows the butterfly valve 465 in an embodiment of a two or four cycle engine in which the exhaust valve is located within the head along with intake valves 450 and 400. In will be appreciated that in other embodiments the butterfly valve 465 is utilized in engines that only include a

16

single combustion chamber, compared to the primary and secondary (tertiary and so forth) chambers shown in FIGS. 19A through 19C. Furthermore, although not shown in FIGS. 19B and 19C, it will be appreciated that the variable compression ratio piston 900 is included in various embodiments of the inventive concepts of FIGS. 19B and 19C. Similarly, various embodiments of the inventive concept of FIG. 19A are utilized without the variable compression ratio piston 900 shown therein.

Various embodiments of the instant inventive concept described herein are included and/or utilize multiphasic dynamic compression ignition combustion in a two cylinder supercharged engine of the type discussed in PCT/US2014/64866, the entire disclosure of which is incorporated herein by reference. It is understood that various embodiments of the inventive concept disclosed herein include single cylinder, two cylinder, and additional cylinder (e.g. 3, 4, 5, 6, 7, 8, etc. cylinders) structures, and also include structures with and without any type of intake boost (e.g. superchargers and/or turbo chargers) (including, but not limited to the structures disclosed in PCT/US2014/64866).

Referring to FIGS. 20 and 21, an exemplary embodiment of the inventive concept is shown as a three cylinder, Siamese cylinder, engine which includes three pistons 100 within cylinders 300 (and 301 and 302), that each includes a generally central protuberance 110 protruding from the top of the main body of the piston. The cylinder head 500 includes a generally central recess 510 (and 511 and 512) within each cylinder that is configured to matingly receive the protuberance 110 of the piston for each cylinder. The central protuberance 110 of the piston is adapted to be slidably received in the central recess 510 (and 511 and 512) of the head. As the piston moves up toward top dead center, the central protuberance 110 of the piston slides into the central recess 510 (and 511 and 512) of the head, creating a primary combustion chamber, and secondary combustion chamber. In some embodiments, the respective volumes of primary combustion chamber and secondary combustion chamber are designed such that the compression ratio of the primary combustion chamber is higher than that of the secondary combustion chamber (in other embodiments, the reverse is true). In that manner, auto-ignition is obtained in the primary combustion chamber either before, at, or after the piston reaches top dead center, without resulting in auto-ignition within the secondary combustion chamber. As the piston moves down from top dead center and protuberance 110 moves out of recess 510 (and 511 and 512) of the head, the pressure created by the combustion within the primary combustion chamber is allowed to expand into the secondary combustion chamber, initiation combustions, ignition and/or combustion ignition within the secondary combustion chamber. In some embodiments, auto-ignition is initiated from pressure propagation through blow-by of primary to secondary combustions chambers, or vice versa.

With respect to each of the cylinders, a central intake valve 400 (and 401 and 402) is located within the recess 510 (and 511 and 512) of the cylinder head to reduce and/or eliminate trap volume within the combustion chamber, and to ensure a homogenous air/fuel/EGR mix within the entire combustion chamber (primary and secondary chambers). In the embodiment shown, additional intake valves 410 (and 420 and 430) and 412 (and 422 and 432) and exhaust valves 415 (and 425 and 435) and 417 (and 427 and 437) are located in the secondary combustion chamber areas. In the embodiment shown, all intake valves (400, 401, 402, 410, 412, 420, 422, 430 and 432) are positioned along a centerline of the engine block. In this manner intake valves 412,

420, 422 and **430** are located in close proximity and adjacent to the cylinder walls of adjoining pistons, which are locations in which hot spots are created. The location of the valves and air flow created through the valves allows heat to soak between adjoining cylinders and away from the hot spot locations. The improved balance of heat throughout the engine allows for greater control and use of compression ignition. It will be appreciated that the balancing of heat of the inventive concept is utilized in combination with single cylinder and other multiple cylinder embodiments (e.g. 2 cylinder, 4 cylinder, etc.).

Referring to FIG. **21**, a dual overhead cam arrangement is shown. Central intake valves **400, 401** and **402** are controlled by overhead cam shaft **1600**. Secondary combustion chamber intake valves **410, 412, 420, 422, 430** and **432**, as well as exhaust valves **417, 417, 425, 425, 435** and **437** are all controlled by overhead cam shaft **1700** located directly above overhead cam shaft **1600**. Rocker arms **715** and **710** (rocker arms associated with cylinders **301** and **302** not shown) extend from cam shaft **1700** to exhaust valves **415** and **417**, respectively. In other embodiments, a single cam is utilized to control all valves. In still other embodiments, three or more cams are utilized. In some three cam embodiments, a central cam shaft controls the central intake valves, while a cam on each side of the engine controls the respective valves on that side of the engine. In still other embodiments, mechanical, electronic and/or hydraulic controllers and/or a combination thereof or utilized to control the various valves. It will be appreciated that in various embodiments, some or all exhaust valves shown herein are utilized as intake valves, and some or all intake valves shown herein are utilized as exhaust valves. In addition, in some embodiments, the same valve functions as both an exhaust and intake valve, depending upon the desired engine performance. Although a dual overhead cam is shown in FIG. **21**, in other embodiments, a single cam is utilized to control both the exhaust and the intake. In other embodiments, three or more cams are utilized. In still other embodiments, other mechanisms for valve actuation are utilized. In some embodiments, the intake valves are electronically actuated, while the exhaust valves are mechanically controlled by a cam. Although not shown in FIG. **21**, it will be appreciated that in some embodiments a variable compression ratio piston is utilized in combination with the structure shown in FIG. **21**.

In some embodiments, the multiple intake valves shown within a single cylinder (e.g. in FIG. **20**) are controlled to open in a staggered pattern to help control roll and tumble of the air/fuel/EGR mixture within the combustion chamber. In some embodiments in which the intake valves are controlled by a cam, the valves opening is staggered from 1-20 degrees from one another. In some embodiments, one intake valve is opened at a time in a staggered pattern. In other embodiments, multiple valves are open at the same time with another valve opened in a staggered pattern. It will be appreciated that the pattern will vary in different embodiments depending upon the desired sweeping motion within the combustion chamber as well as the physical shape, size and design of the components.

Referring to FIG. **21**, in the embodiment shown, the design of piston **100**, with the protuberance **110** located at the center of piston **100**, allows the wrist-pin **210** to attach rod **200** to the piston at a location of increased thickness of the piston (due to the protuberance). This increases strength at a location that otherwise is under increased stress. In addition, the relatively high connection on the piston allows

for greater control of the piston and decreased piston slap as the piston moves up and down within the cylinder.

In some embodiments of the engine shown in FIGS. **20** and **21**, intake and exhaust manifolds are designed such that the at least a portion of the exhaust lines are in physical contact, or at least in close proximity to the intake lines. In this manner the exhaust lines are utilized to preheat the intake. In some embodiments, a butterfly valve, similar to that shown in FIGS. **19A, B** and **C**, is utilized to divert exhaust gas from a portion of the exhaust manifold that is in contact/proximity to the exhaust lines to a portion of the exhaust manifold that is positioned away from the intake lines. In this manner, the preheating can be selectively engaged and disengaged utilizing the valve. In some embodiments, the valve is located at a "T" in the manifold, and the exhaust lines come out from the ports generally in parallel to the intake lines, with the "T" diverting the exhaust down and away from the intake lines, or when not selectively diverted, allowing the exhaust gases to flow through the portion of the manifold that continues in parallel to the intake lines (and in contact or close proximity to the intake lines). In some embodiments there is a separate intake line entering from each side of the engine, along with exhaust lines on each side of the engine, to provide balanced heat transfer. In some embodiments, the intake and exhaust line on each side of the engine are side-by-side (in physical contact or close proximity to one another) and bend upward toward the top of the engine. The intake lines meet each other and connect together at the top of the engine and in some embodiments a fuel injector is located at the top of the intake. In some embodiments, the exhaust lines also meet each other and connect together and flow outward in a single exhaust pipe near the point of intersection. In other embodiments, each exhaust line continues over the top of the engine and down the opposing side from which it originated and then outward from the engine. In some embodiments, the intake and exhaust manifold is a single molded or cast piece that bolts over the engine head. In some embodiments in which the intake lines come together at the top of the engine

Referring to FIG. **22**, a top plan view of another embodiment of a three cylinder Siamese cylinder engine that includes multiple protuberances of the inventive concept. In addition to protuberance **110** (which in FIG. **22** engages with recesses **510a, 511a**, and **512a**), other protuberances are located around the top of the piston surrounding protuberance **110** and engage with recesses **510b, c, d**, and **e, 511b, c, d**, and **e**, and **512b, c, d** and **e**. It will be appreciated that the numbers, sizes, shapes and locations of the protuberances will vary in different embodiments. In some embodiments, each protuberance has a different volume to provide a different compression result (e.g. creating primary, secondary, tertiary, etc. combustion chambers). In other embodiments, the volume of each protuberance is equal to provide the same compression within each recess.

The valves shown and described in the above-embodiments of the inventive concept are controlled in various embodiments by mechanical, electrical, mechanical-electrical, hydraulic, combinations thereof, and/or other mechanisms for actuation now known or hereafter discovered. Although cam and rocker arm assemblies are shown in some embodiments above, it will be appreciated that in other embodiments, other valve actuation mechanisms will be utilized in connection with the same or similar features of the inventive concept therein described. In various embodiments, intake and exhaust valves are actuated in or out of sequence, depending upon design and performance desired.

19

Although not shown and described herein, it will be appreciated that various embodiments of the Siamese cylinder inventive concept are employed with the various features, combinations and subcombinations of the other systems and methods of compression ignition disclosed herein.

In the foregoing description, certain terms have been used for brevity, clearness and understanding; but no unnecessary limitations are to be implied therefrom beyond the requirements of the prior art, because such terms are used for descriptive purposes and are intended to be broadly construed. Moreover, the description and illustration of the inventions is by way of example, and the scope of the inventions is not limited to the exact details shown or described.

Although the foregoing detailed description of the present invention has been described by reference to an exemplary embodiment, and the best mode contemplated for carrying out the present invention has been shown and described, it will be understood that certain changes, modification or variations may be made in embodying the above invention, and in the construction thereof, other than those specifically set forth herein, may be achieved by those skilled in the art without departing from the spirit and scope of the invention, and that such changes, modification or variations are to be considered as being within the overall scope of the present invention. Therefore, it is contemplated to cover the present invention and any and all changes, modifications, variations, or equivalents that fall within the true spirit and scope of the underlying principles disclosed and claimed herein. Consequently, the scope of the present invention is intended to be limited only by the attached claims, all matter contained in the above description and shown in the accompanying drawings shall be interpreted as illustrative and not in a limiting sense.

Having now described the features, discoveries and principles of the invention, the manner in which the invention is constructed and used, the characteristics of the construction, and advantageous, new and useful results obtained; the new and useful structures, devices, elements, arrangements, parts and combinations, are set forth in the appended claims.

It is also to be understood that the following claims are intended to cover all of the generic and specific features of the invention herein described, and all statements of the scope of the invention which, as a matter of language, might be said to fall therebetween.

What is claimed is:

1. An internal combustion engine comprising:

a cylinder;

a piston located within said cylinder, said piston including a central protuberance;

a cylinder head enclosing said piston within said cylinder, said cylinder head including a central recess associated with said central protuberance; and

a valve located within said central recess;

wherein said cylinder, cylinder head and central recess define a combustion chamber,

wherein said central recess and said protuberance define primary and secondary chambers within said combustion chamber,

wherein said primary and secondary chambers are in constant fluidic communication with each other during an entire stroke of said piston within said cylinder, and wherein compression ignition occurs within said primary chamber.

20

2. The engine as claimed in claim 1 wherein said valve helps to reduce trap volume within said combustion chamber.

3. The engine as claimed in claim 2 wherein said valve prevents and/or reduces carbon buildup and/or catastrophic interference.

4. The engine as claimed in claim 1 wherein said valve helps to ensure a homogenous mixture within said combustion chamber.

5. The engine as claimed in claim 1 wherein ignition within said secondary chamber occurs after said piston has moved past top dead center of said stroke.

6. The engine as claimed in claim 1 further comprising one or more ports through said central protuberance.

7. The engine as claimed in claim 6 wherein said one or more ports aid in said fluidic communication.

8. The engine as claimed in claim 6 wherein said one or more ports control said fluidic communication.

9. The engine as claimed in claim 1 further comprising one or more ports through said cylinder head extending between said central protuberance and an interior of said cylinder.

10. The engine as claimed in claim 9 wherein said one or more ports aid in said fluidic communication.

11. The engine as claimed in claim 9 wherein said one or more ports control said fluidic communication.

12. The engine as claimed in claim 1 further comprising a variable compression ratio piston located in said central recess.

13. The engine as claimed in claim 1 further comprising a gap between an outer circumference of said central protuberance and an inner wall of said central recess sufficient to enable fluidic communication.

14. An internal combustion engine comprising:
a cylinder;

a piston located within said cylinder, said piston including a protuberance; and

a cylinder head enclosing said piston within said cylinder, said cylinder head including a recess associated with said protuberance,

wherein said cylinder, cylinder head and recess define a combustion chamber;

wherein said recess and said protuberance define primary and secondary chambers within said combustion chamber,

wherein said primary and secondary chambers are in constant fluidic communication with each other during an entire stroke of said piston within said cylinder, and wherein pressure ignition occurs within said secondary chamber.

15. The engine as claimed in claim 14 further comprising a gap between said protuberance and said recess sufficient to enable said constant fluidic communication.

16. An internal combustion engine comprising:

a cylinder;

a piston located within said cylinder, said piston including a central protuberance;

a cylinder head enclosing said piston within said cylinder, said cylinder head including a central recess associated with said central protuberance; and

a rod attached to said piston at a first location, said first location being determined based on a location of said central protuberance;

wherein said cylinder, cylinder head and central recess define a combustion chamber having primary and secondary chambers, and

21

wherein pressure ignition occurs within said secondary chamber.

17. An internal combustion engine comprising:

a cylinder;

a piston located within said cylinder;

5

a cylinder head enclosing said piston within said cylinder;
and

a valve extending through said cylinder head at a location
along a wall of said cylinder in which a hot spot is
located,

10

wherein said cylinder, cylinder head, and piston define a
combustion chamber having primary and secondary
chambers, and

wherein pressure ignition occurs within said secondary
chamber.

15

18. The engine as claimed in claim **17** wherein said valve
is located along a centerline of the engine.

19. The engine as claimed in claim **18** further comprising
two additional valves respectively locating on opposing
sides of the engine offset from said centerline.

20

* * * * *

22